

WEAR YOUR MASK SAFELY



Do make sure your mask fits snugly against the sides of your face and covers your nose and mouth.

Do wear a mask when you can't keep your distance from others.



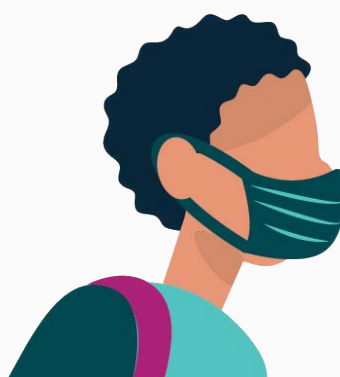
Don't wear your mask below your nose.



Don't wear a mask that doesn't cover your chin.



Don't remove or adjust your mask while wearing it.



Don't wear a mask that is too loose.