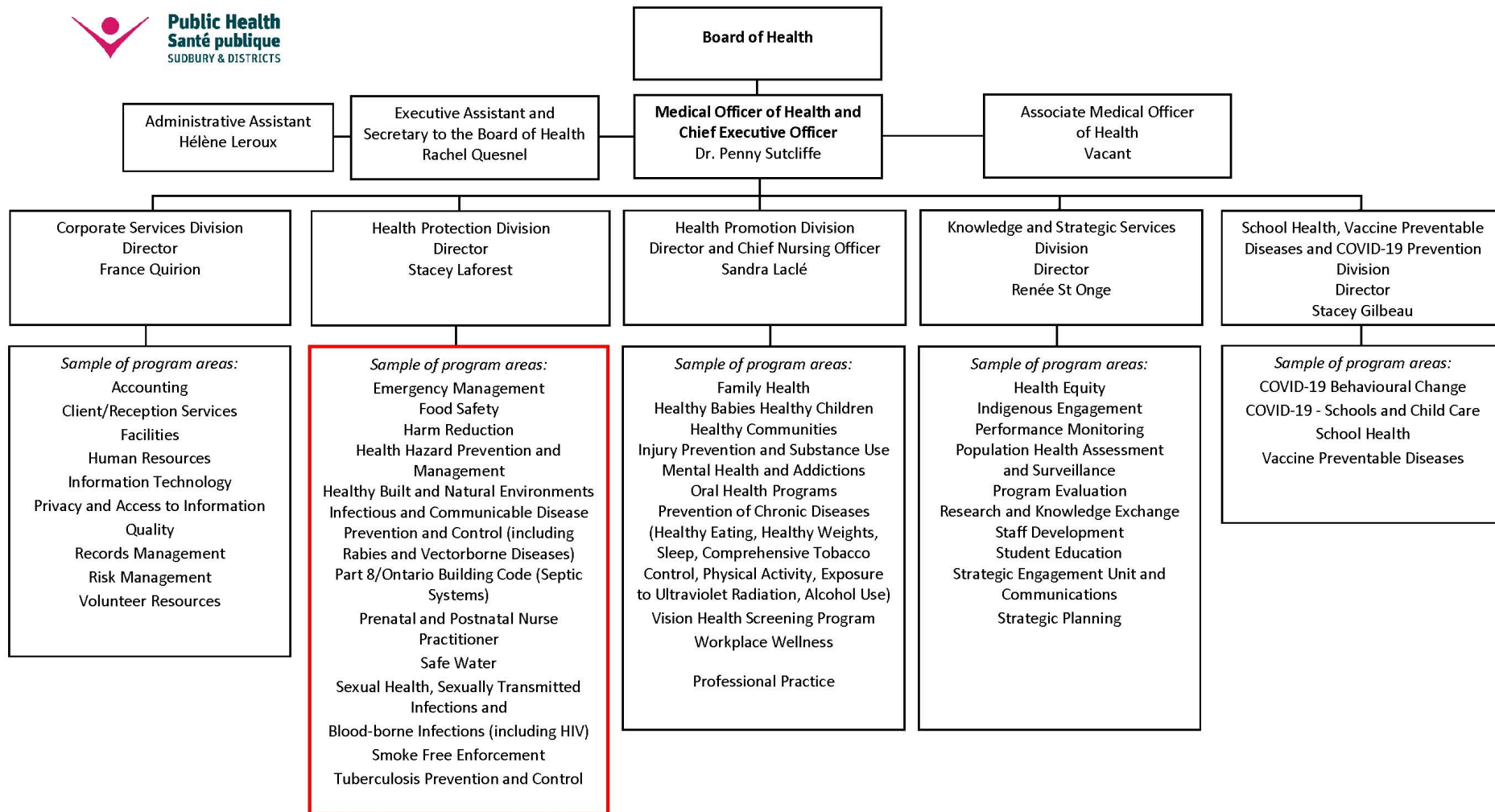




Assessing health risks and planning adaptations together



Public Health
Santé publique
SUDBURY & DISTRICTS

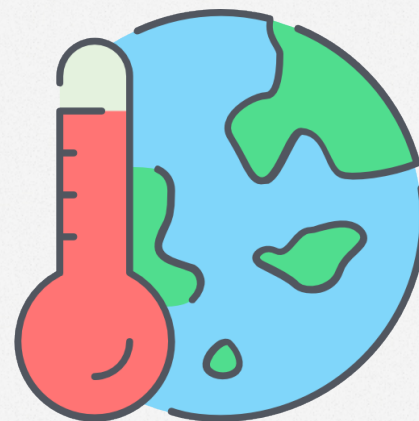


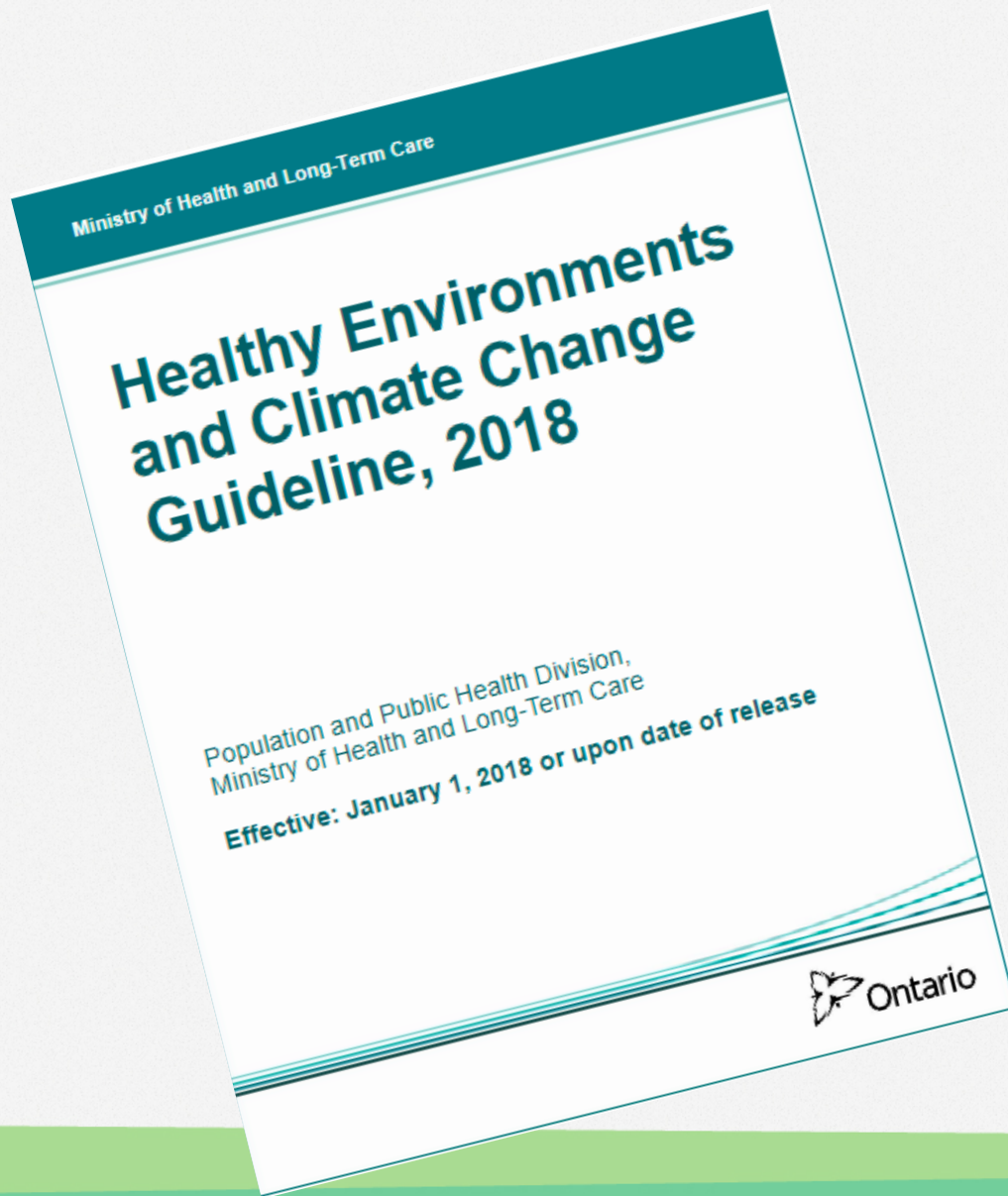
R: August 24, 2020





An unprecedented challenge



“Healthier communities for all.”





-  Collaborate with municipalities and partners
-  Reduce health hazards
-  Promote healthy environments
-  Plan climate change adaptations

How do we support adaptation?



Assess health
impacts and
plan
adaptations



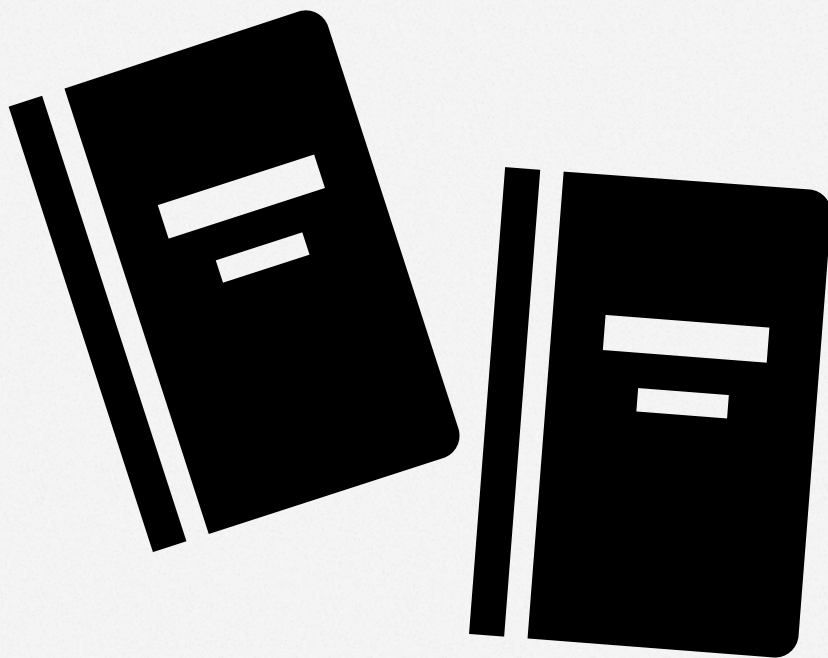
Hazards of climate change

Hazards of climate change associated with morbidity and mortality:

- Extreme heat
- Vector-borne disease
- Wildfire
- Storms
- Floods
- Freezing rain



Supporting Climate Change and Health Vulnerability and Adaptation Assessments



1. Backgrounder
2. Climate change modelling study

Assessing Health Risks and Planning Adaptations Together

Knowledge for Municipalities and Stakeholders to
conduct *Climate Change and Health Vulnerability
and Adaptation Assessments*

Public Health Sudbury & Districts
October 2020



Public Health
Santé publique
SUDBURY & DISTRICTS

- Increasing hazards of climate change
- Health outcomes of concern
- Individuals at greatest risk
- Assessing vulnerability to climate change
- Climate change concepts and terms
- Resources and tools

Temperature and Precipitation Projections for Espanola and Area

A Climate Change Modelling Study

Public Health Sudbury & Districts
August 2020



Public Health
Santé publique
SUDBURY & DISTRICTS

- Seasonal temperatures
- Extreme hot and cold
- Changes to frost season
- Seasonal precipitation
- Freezing rain
- Wildfire risk
- Demographic profile

Sudbury, April 2014



Caraquet, NB, January 2017



Next steps





Copyright ©



**Public Health
Santé publique**
SUDBURY & DISTRICTS

This presentation was prepared by Public Health Sudbury & Districts.

This resource may be reproduced, for educational purposes, on the condition that full credit is given to Public Health Sudbury & Districts.

This resource may not be reproduced or used for revenue generation purposes.

© 2020, Public Health Sudbury & Districts