

# Transforming data into evidence and strengthening relationships along the way

Dar Malaviarachchi, Epidemiologist

Jacqueline Edwards, Data Analyst

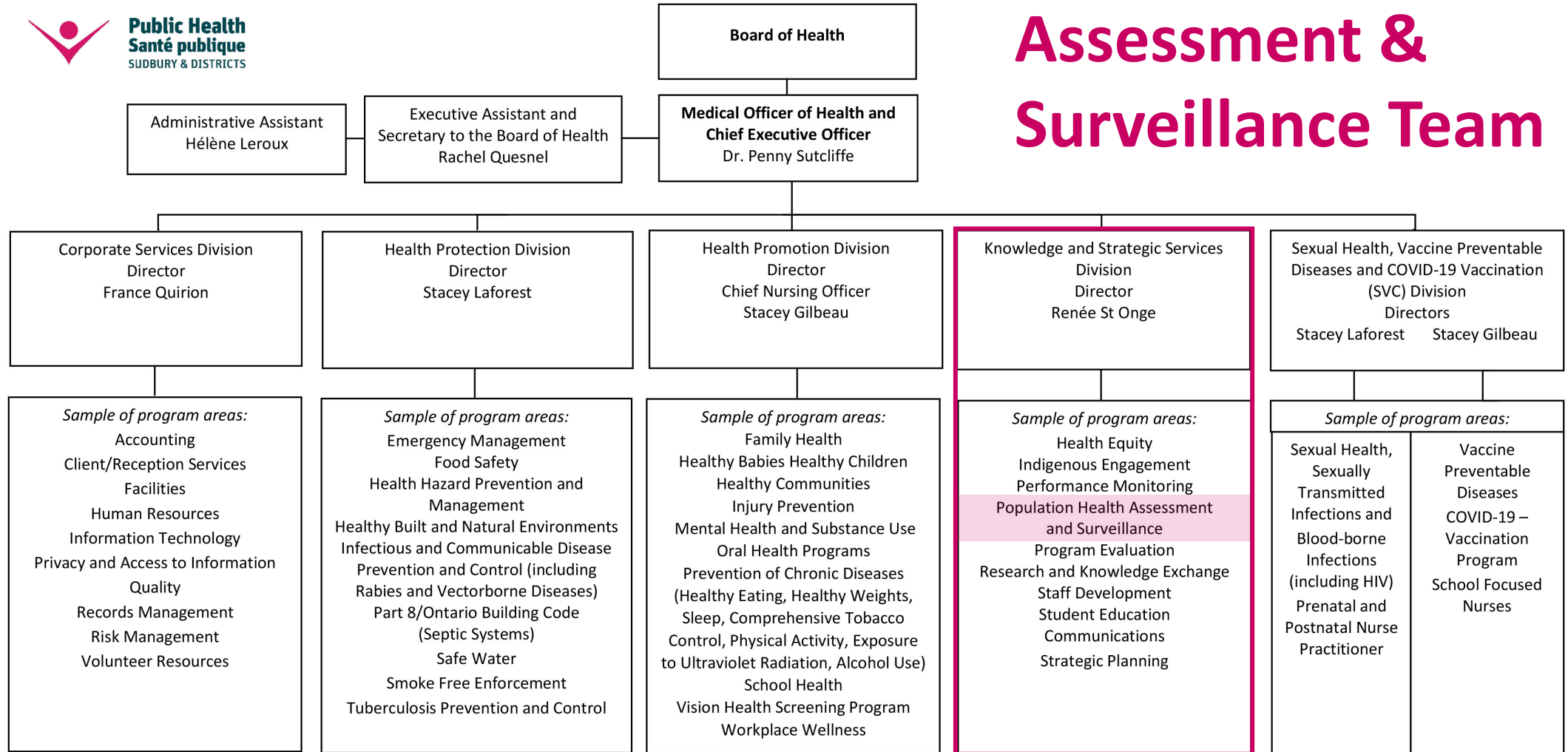
Knowledge and Strategic Services Division

Thursday, November 16, 2023



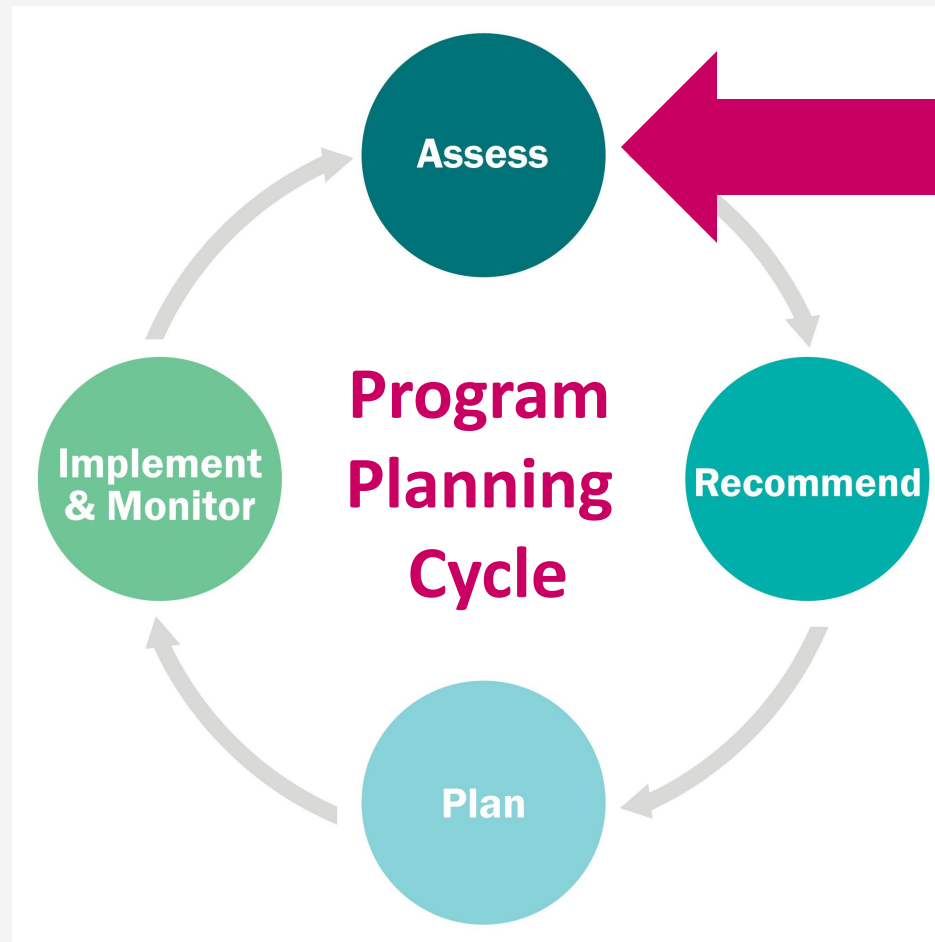
**Public Health**  
**Santé publique**  
SUDBURY & DISTRICTS

# Population Health Assessment & Surveillance Team



R: June 8, 2023

# Public health programming needs to be based on high quality evidence



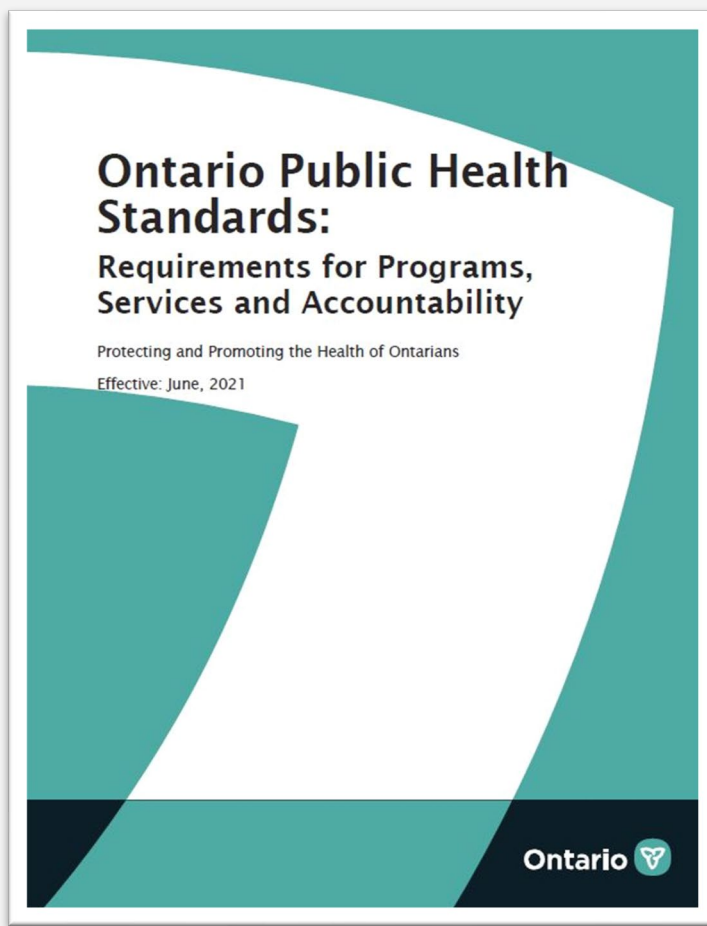
# Information on local population health issues is one important source of evidence



**Data analytics, grounded in community context and partnerships, is essential to the development of effective local public health programs**



# Reporting on such data is required by the Ontario Public Health Standards

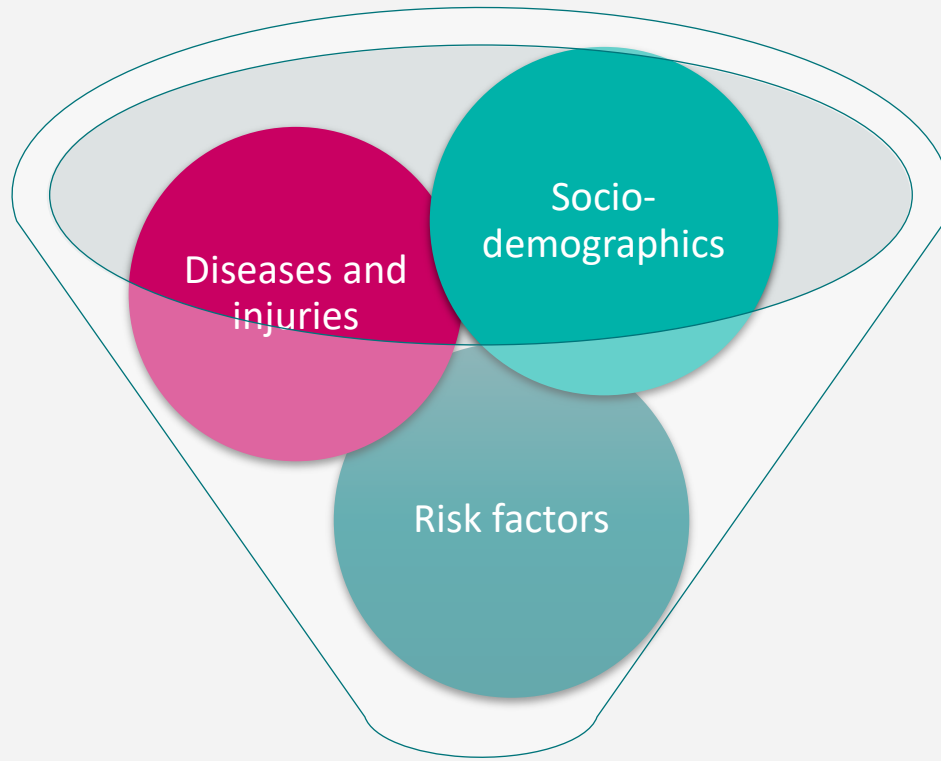


## Foundational Standards

1. Population Health Assessment
2. Health Equity
3. Effective Public Health Practice
4. Emergency Management

## Program Standards

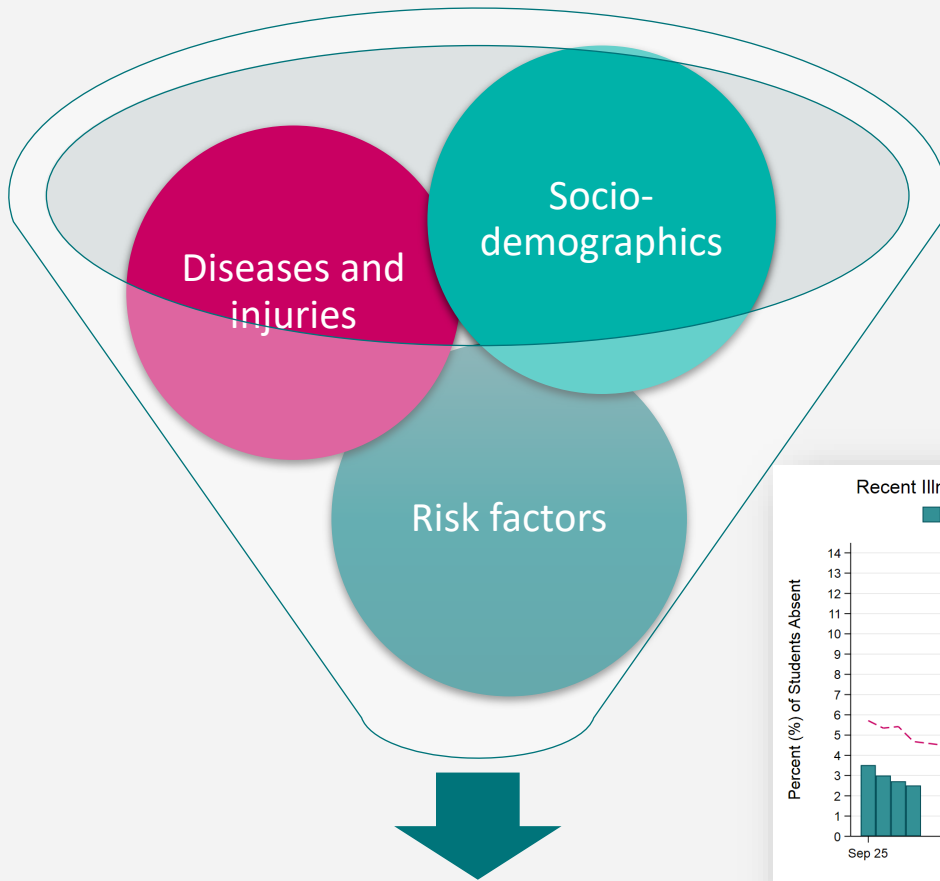
1. Chronic Disease Prevention and Well-being
2. Food Safety
3. Healthy Environments
4. Healthy Growth and Development
5. Immunization
6. Infectious and Communicable Disease Prevention and Control
7. Safe Water
8. School Health
9. Substance Use and Injury Prevention



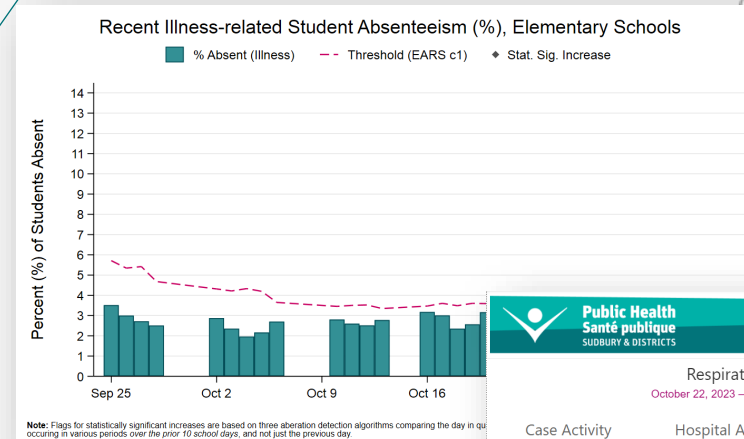
**30** Data sources

**152** Categories of data

**Our team is responsible for processing a huge (and increasing) amount of data**



# We produce analyses, reports, and dashboards



## Local information



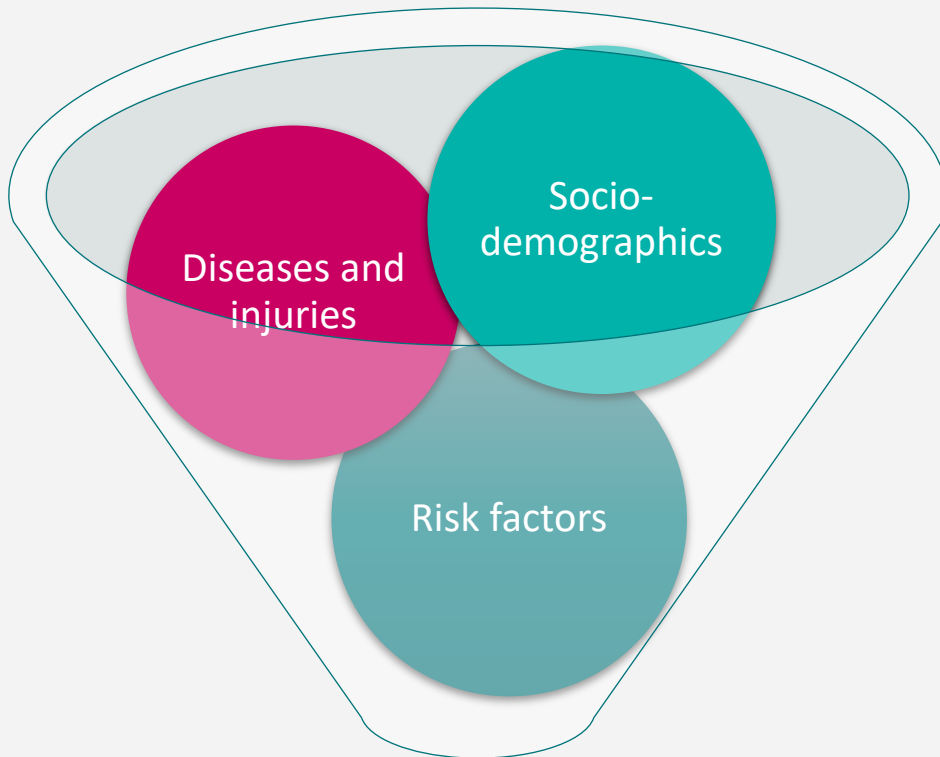
**Public Health  
Santé publique  
SUDBURY & DISTRICTS**

**Respiratory Surveillance Dashboard**  
October 22, 2023 – October 28, 2023; Updated Tuesdays by 4 p.m.

Case Activity	Hospital Activity	Outbreak Activity	Wastewater Activity
VERY HIGH	VERY HIGH	VERY HIGH	VERY HIGH

<b>COVID-19 percent positivity</b> Value: 21.76% Trend: ↑ Activity: [Bar Chart]	<b>New COVID-19 admissions</b> Value: 36 Trend: ↓ Activity: [Bar Chart]	<b>New COVID-19 outbreaks</b> Value: 7 Trend: ↑ Activity: [Bar Chart]	<b>COVID-19 wastewater signal</b> Value: 0.01074666 Trend: ↑ Activity: [Bar Chart]
<b>New influenza cases</b> Value: 0 Trend: → Activity: [Bar Chart]	<b>New influenza admissions</b> Value: 0 Trend: → Activity: [Bar Chart]	<b>New influenza outbreaks</b> Value: 0 Trend: → Activity: [Bar Chart]	
<b>New RSV admissions</b> Value: 1 Trend: ↑ Activity: [Bar Chart]	<b>New other respiratory OBs</b> Value: 0 Trend: ↓ Activity: [Bar Chart]		





**Local information**



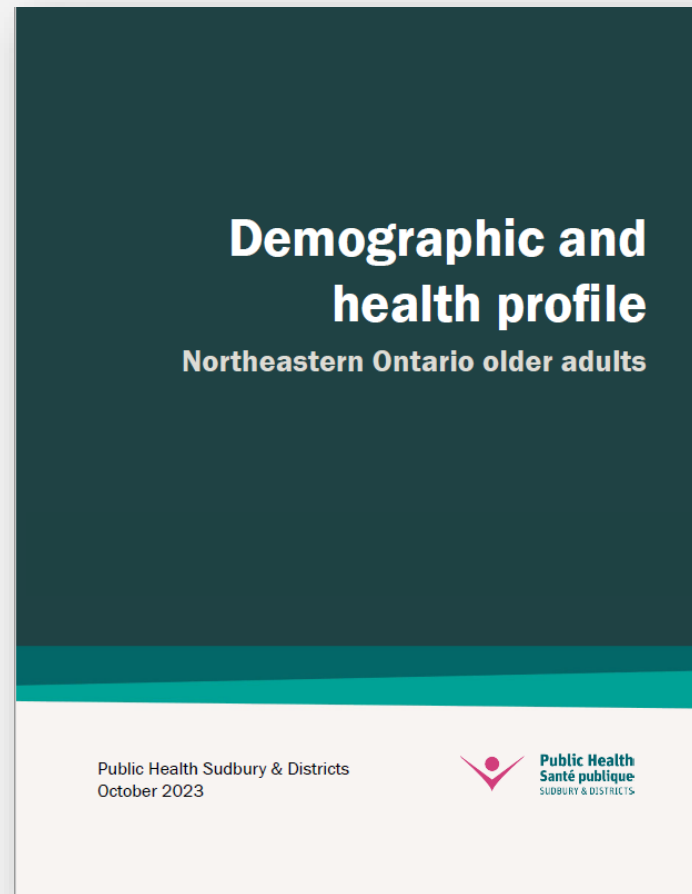
**Local action**

**Our work is essential to help identify...**

- ▶ Local public health needs
- ▶ Trends and emerging issues
- ▶ Priorities populations
- ▶ Program effectiveness

**...to inform local ACTION**

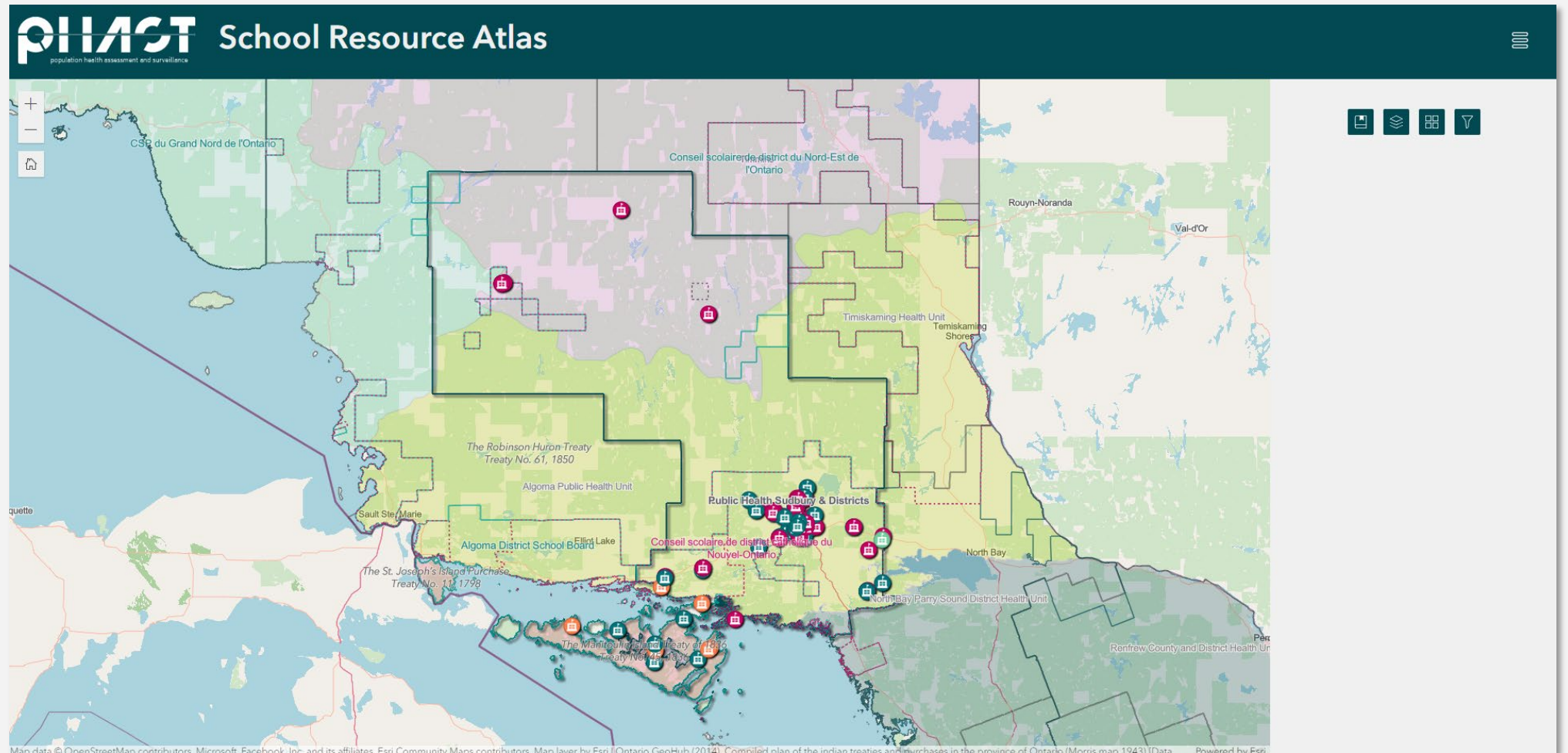
# Informing local action: Profiling older adults in Northeastern Ontario



# Informing local action: Monitoring routine student immunization rates



# Informing local action: Mapping the resources available to schools



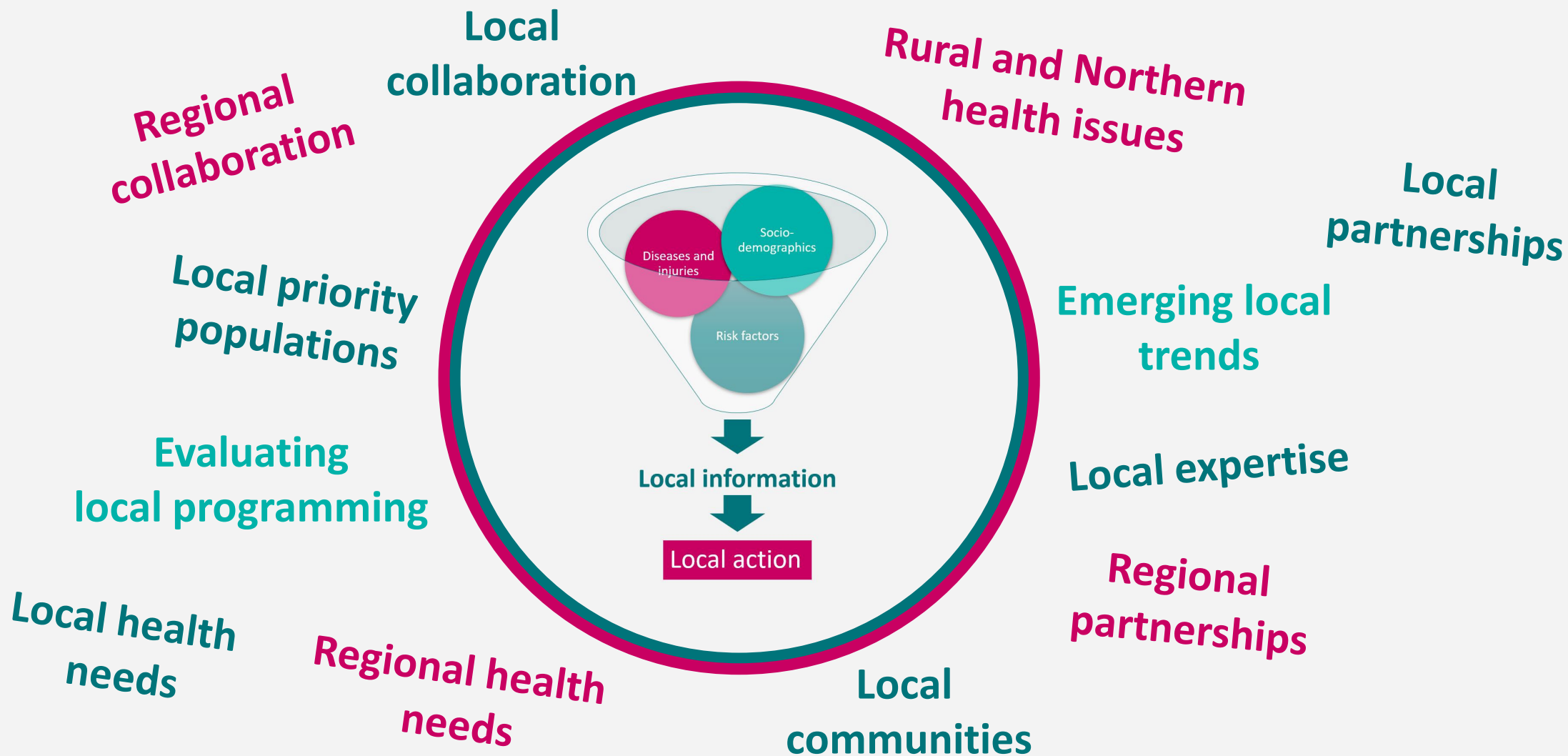
# The effectiveness of our work is greatly enhanced by our **strong relationships** with local partners



The local information we provide can be **vital to their work** as well



# Local analytics are essential to effective local action





# Copyright ©

---

This presentation was prepared by Public Health Sudbury & Districts.

This resource may be reproduced, for educational purposes, on the condition that full credit is given to Public Health Sudbury & Districts.

This resource may not be reproduced or used for revenue generation purposes.

© 2023, Public Health Sudbury & Districts